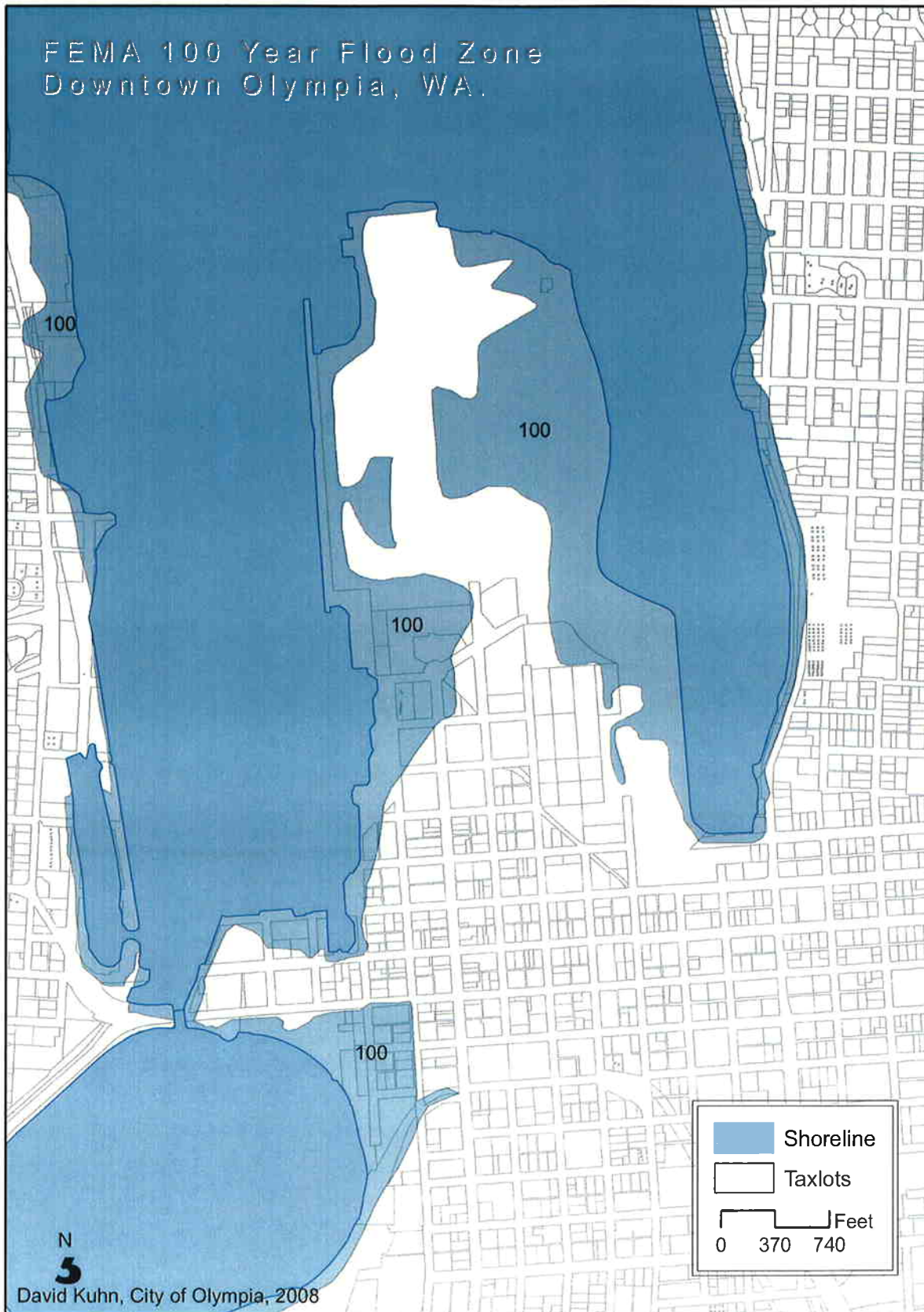
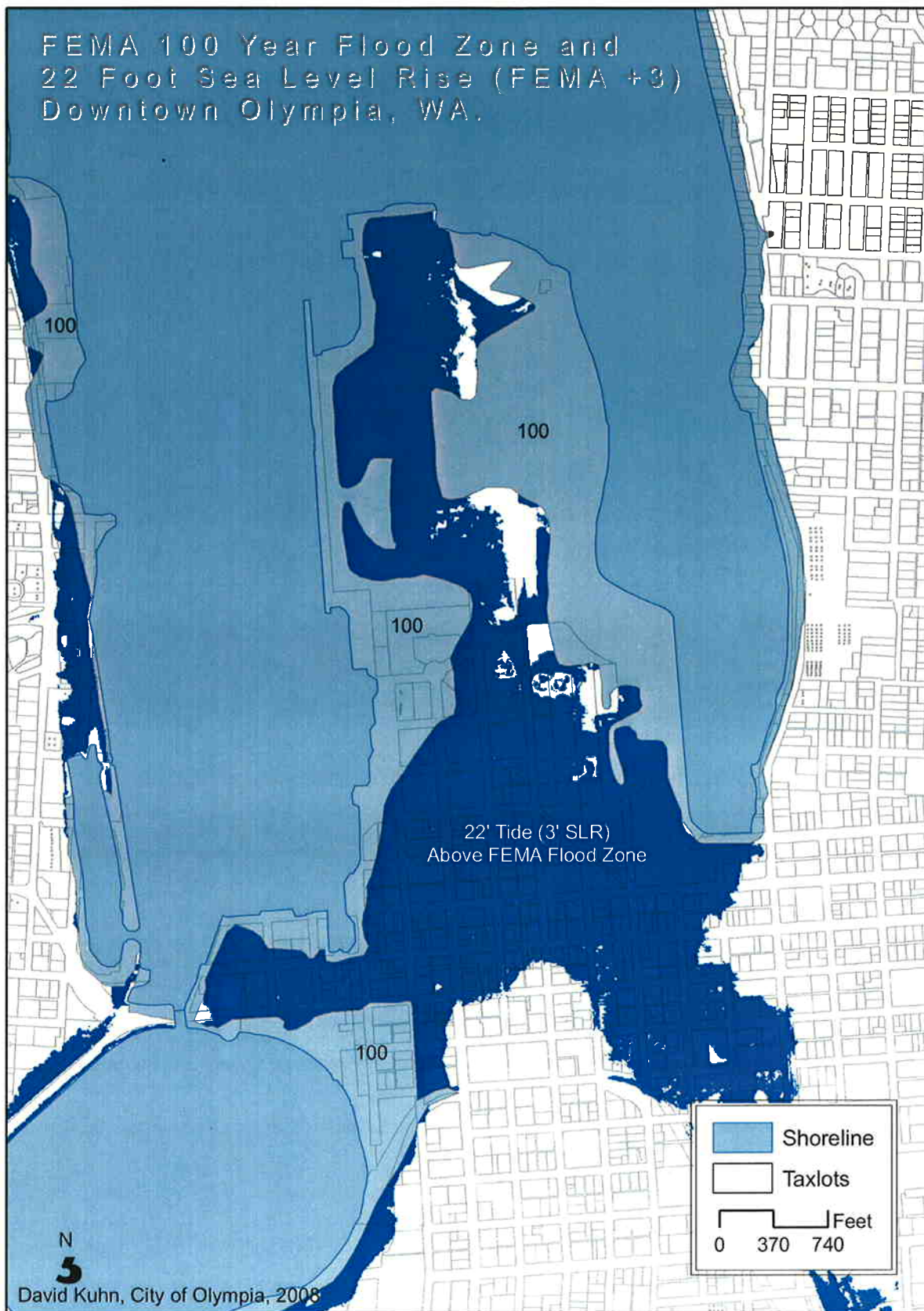


8



The City of Olympia uses the most current and complete data available. However, GIS data and product accuracy may vary. GIS data and products may be developed from sources of differing accuracy, accurate only at certain scales, based on modeling or interpretation, incomplete while being created or revised, etc. The City of Olympia reserves the right to correct, update, modify, or replace, GIS products without notification. The City of Olympia cannot assure the accuracy, completeness, reliability, or suitability of this information for any particular purpose. Using GIS data for purposes other than those for which they were created may yield inaccurate or misleading results. The recipient may neither assert any proprietary rights to this information nor represent it to anyone as other than City Government-produced information. The City of Olympia shall not be liable for any activity involving this information with respect to lost profits, lost savings or any other consequential damages.

FEMA 100 Year Flood Zone and 22 Foot Sea Level Rise (FEMA +3) Downtown Olympia, WA.



The City of Olympia uses the most current and complete data available. However, GIS data and product accuracy may vary. GIS data and products may be developed from sources of differing accuracy, accurate only at certain scales, based on modeling or interpretation, incomplete while being created or revised, etc. The City of Olympia reserves the right to correct, update, modify, or replace, GIS products without notification. The City of Olympia cannot assure the accuracy, completeness, reliability, or suitability of this information for any particular purpose. Using GIS data for purposes other than those for which they were created may yield inaccurate or misleading results. The recipient may neither assert any proprietary rights to this information nor represent it to anyone as other than City Government-produced information. The City of Olympia shall not be liable for any activity involving this information with respect to lost profits, lost savings or any other consequential damages.